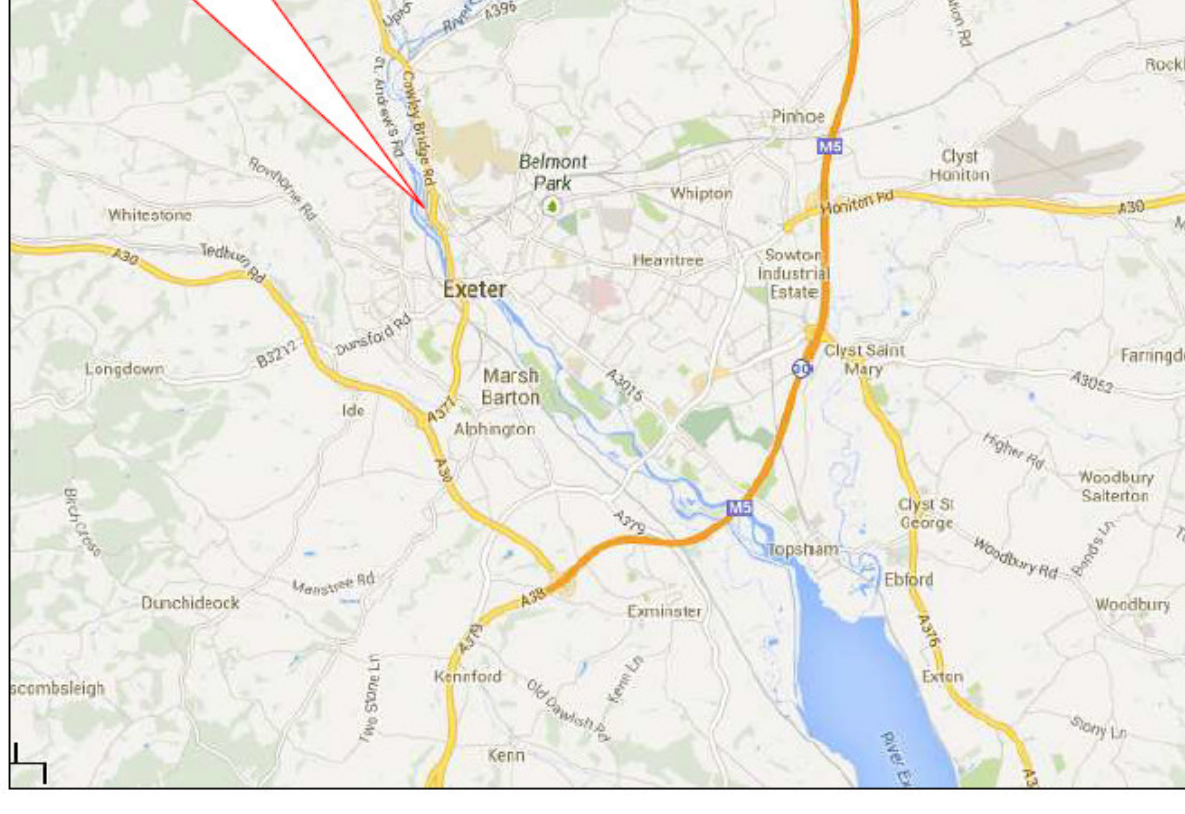


## Directions to EVES Emergency Vets

**EVES Veterinary Hospital**  
**St Davids Station**  
**Exeter EX4 4NT**  
**Tel: 01392 284217**



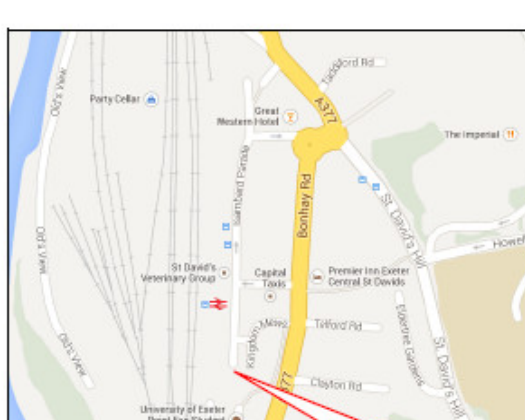
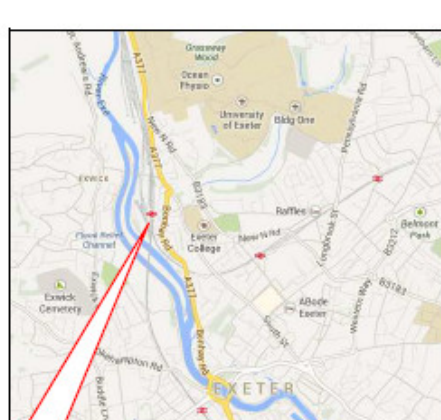
### From Exmouth:

You are heading to Exeter St Davids Station – The Veterinary Hospital is next door to the main entrance of the station.

Follow the A376 into Exeter, going under Junction 30 of the M5. You can then take two routes:

- A. Take the 2<sup>nd</sup> exit off the roundabout and follow the A 379 to the next roundabout at the junction of the Topsham Road (A3015). Take the 3<sup>rd</sup> exit and head towards Exeter centre on the Topsham road (A3015). Keep on the A3015 as it turns into Western Way and drops down to the River Exe. At the large roundabout take 4<sup>th</sup> Exit onto Bonhay road (A379) towards Exeter St Davids Rail station.
- B. Take the 3<sup>rd</sup> Exit and get into the left lane. At the next traffic lights turn left onto the Sidmouth road and continue to the next roundabout. Take the second exit down the B3183 and follow this road all the way into the centre of Exeter, passing through Heavitrees. Follow the signs for the Exeter St Davids (Not Exeter central station) and Exeter College.

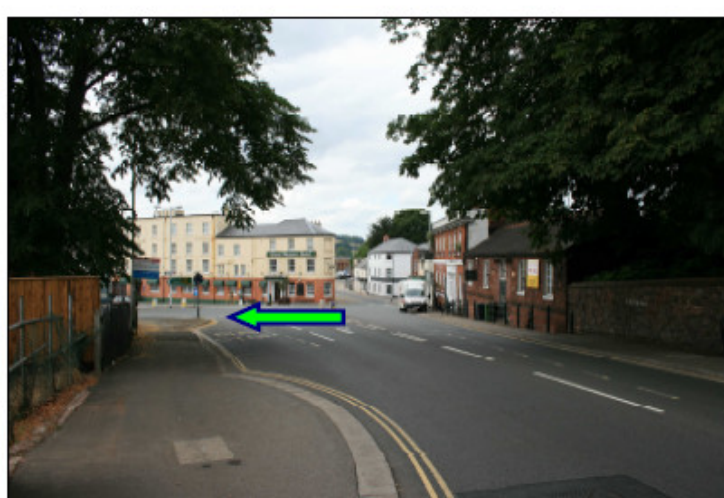
### Finding us when you're near St Davids Railway Station:



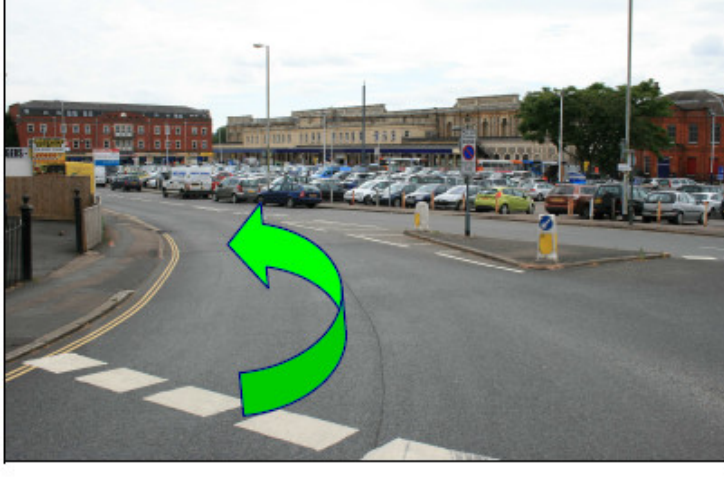
EVES Hospital

Down this road to the end to find free parking at the EVES hospital,

#### 1. Head down St Davids Hill



#### 2. At the bottom turn left at the mini roundabouts, towards St Davids Station main entrance.



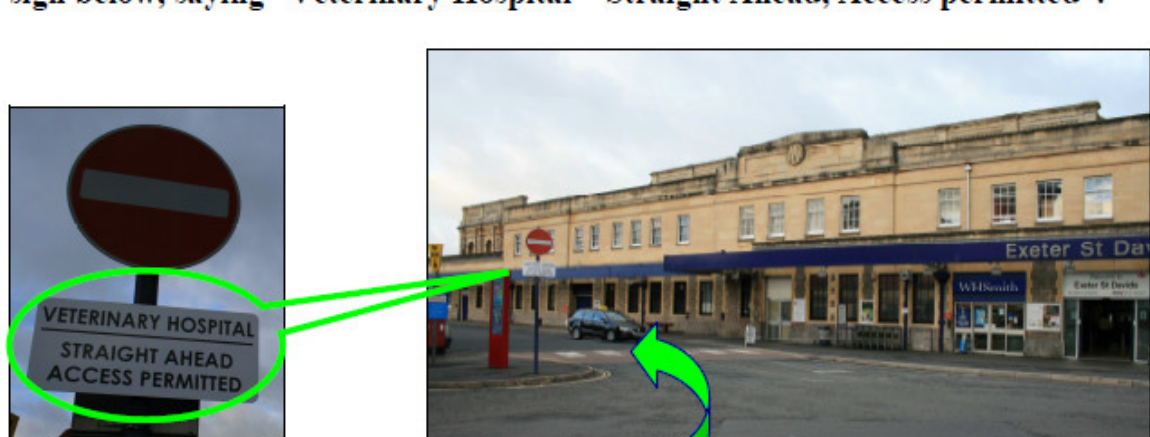
#### 3. Go along this road for 100m, past the station sign on the right and turn right into the main entrance to St Davids Station.



#### 3. Drive up to the entrance and just before it, you will see a zebra crossing on the left.



#### 4. At the left of the zebra crossing is a post with a "No Entry" sign with a white sign below, saying "Veterinary Hospital – Straight Ahead, Access permitted".



#### 5. Turn left and drive over the zebra crossing. Head down this road to the end. EVES Veterinary hospital is the building at the end, about 150m down the road with it's own free car park.

EVES Vet Hospital at end of road



#### 6. Park and ring the doorbell to the right of the metal intercom buzzer, at the entrance.

